



7940 siaair

High-gloss varnishes and solid surfaces



7940 siaair – High-gloss varnishes and solid surfaces



Product profile

Grit type:	Aluminium oxide
Grit range:	240; 360; 500-1000; 1500-2000; 3000-4000
Backing:	Knitted fabric with foam backing
Coating:	Special process
bonding:	resin over resin

The improved siaair technology of 7940 siaair is the key to a perfect finish in damp and dry sanding applications – whether it's scuffing, fine sanding or preparation for polishing.

Advantages

- High stock removal rates and excellent finish
- Low clogging in damp and dry sanding applications
- Highly adaptable to contours, curves and profiles
- Pressure-equalising foam gives perfect surface finish
- Waterproof and washable
- Resistant to silicon remover

Applications

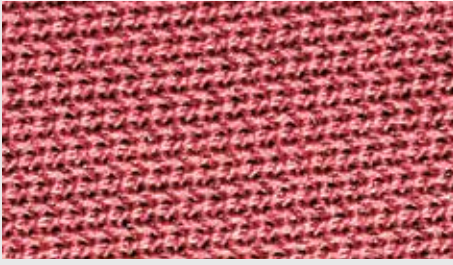
- Matt finishing of conventional old and new varnishes as well as composite materials
- Fine sanding of primer filler in hard-to-reach areas
- Producing a matt finish for blending
- Preparation for polishing on high-gloss surfaces

Materials

Colour; Varnish; Old lacquer; Gelcoat polyester; Plastics; Acrylic glass (Plexiglass); Primer filler; Composite

Use



1 Net backed abrasive**2 Foam cushioning****3 siafast fastening system**

On the outside, the ingenious net-backed abrasive, in the middle the foam cushioning which equalizes the application pressure and on the inside the well proven siafast hook and loop fastening system.

Your advantages at a glance:

- **Equalizing application pressure**
- **Can be used many times**
- **Absorbs water**
- **Air and water permeability**



Before painting



Producing a mat finish on painted surfaces



For blending

1. Step

7940 siaair

Grit: 800 / 1000

Type of sanding: moist

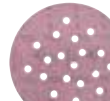


1. Step

1950 siaspeed

Grit: P800

Type of sanding: dry



2. Step (Blend base coat)

7940 siaair

Grit: 2000

Type of sanding: moist



3. Step (Blend clear coat)

7940 siaair

Grit: 3000

Type of sanding: moist



4. Step

siachrome polishing system



Perfect finish



Best Practice Protective disc



To protect the machine during damp sanding



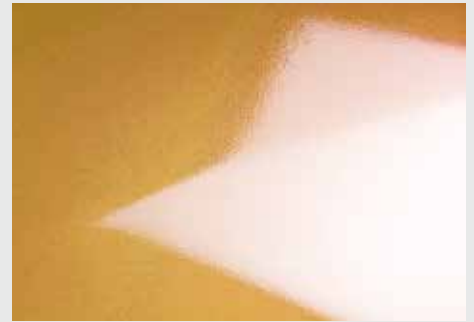
After painting



Removing dust inclusions



Removing paint runs



Removing orange peel effect

1. Step

1913 siawat

Grit: P2000 – 2500
Type of sanding: moist



2. Step

7940 siaair

Grit: 3000
Type of sanding: moist



3. Step

siachrome polishing system



Perfect finish



1. Step

1913 siawat

Grit: P1200
Type of sanding: wet



2. Step

7940 siaair

Grit: 2000
Type of sanding: moist



3. Step

7940 siaair

Grit: 3000
Type of sanding: moist



4. Schritt

siachrome polishing system



Perfect finish



1. Step

1950 siaspeed

Grit: P1500
Type of sanding: dry



2. Step

7940 siaair

Grit: 2000
Type of sanding: moist



3. Step

7940 siaair

Grit: 3000
Type of sanding: moist



4. Schritt

siachrome polishing system



Perfect finish





Varnish errors on high-gloss surfaces



Convex parts



Solid surfaces

1. Step

1950 siaspeed

Grit: P1000

Type of sanding: dry



2. Step

7940 siaair

Grit: 1500

Type of sanding: moist



3. Step

7940 siaair

Grit: 3000

Type of sanding: moist



4. Step

**siachrome
polishing system**



Perfect finish



1. Step

7940 siaair

Grit: 240

Type of sanding: dry



2. Step

7940 siaair

Grit: 320 – 500

Type of sanding: moist



3. Step

7940 siaair

Grit: 1500 – 3000

Type of sanding: moist



4. Step

**siachrome
polishing system**



Perfect finish



1. Step

1950 siaspeed

Grit: P280

Type of sanding: dry



2. Step (Surface matt)

1950 siaspeed

Grit: 320 – 600

Type of sanding: dry



3. Step (Surface silky luster)

7940 siaair

Grit: 1000 – 1500

Type of sanding: moist



4. Step (Prep. high-gloss surface)

7940 siaair

Grit: 2000 – 3000

Type of sanding: moist



5. Step

**siachrome
polishing system**



Perfect finish



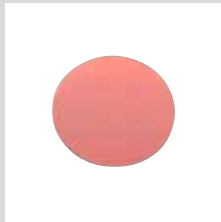
Further information about products,
applications and much more:

www.sia-abrasives.com





7940 siaair
 ø 80 mm
 Art. ID: 3647.2462.xxxx
 Grit range: 1000, 2000,
 3000, 4000



7940 siaair
 ø 125 mm
 Art. ID: 4635.7963.xxxx
 Grit range: 240, 360, 500,
 600, 800, 1000, 1500,
 2000, 3000, 4000



7940 siaair
 ø 150 mm
 Art. ID: 5156.3687.xxxx
 Grit range: 240, 360,
 500, 600, 800, 1000,
 1500, 2000, 3000, 4000



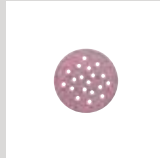
7940 siaair
 115 x 140 mm
 Art. ID: 6329.7598.xxxx
 Grit range: 600, 800,
 1000, 1500, 2000



1950 siaspeed
 ø 150 mm, 119-hole
 Art. ID: 8420.1301.xxxx
 P100-P600, siafast



1950 siaspeed
 ø 150 mm, 15-hole
 Art. ID: 7546.2948.xxxx
 P800 - P1500, siafast



1950 siaspeed
 ø 80 mm, 19-hole
 Art. ID: 2234.5997.xxxx
 P800 - P1500, siafast



1913 siawat
 70 x 125 mm
 Art. ID: 5980.9923.xxxx
 P180 - P2500, siafast



1913 siawat
 140 x 230 mm
 Art. ID: 9219.5517.xxxx
 P1500 - P2500, plain



1913 siawat
 230 x 280 mm
 Art. ID: 3100.3713.xxxx
 P60 - P2500, plain



1913 siawat
 ø 37 mm, P1500, 2000, 2500
 siafast: 4269.7970.xxxx
 SKF: 9251.0230.xxxx

Abrasives



Back plate 103-hole
 ø 150 mm
 Art. ID: 0020.574x.01
 hard/soft/extra soft
 with 5/16" and
 M8 thread/shaft



**Intermediate
 103-hole with J-Hook**
 ø 150 mm
 5 mm: 0020.7430.01
 10 mm: 0020.5886.01



**Intermediate Pad 15-
 hole with microklett**
 ø 150 mm
 Art. ID: 0020.4546.02



Protection disc
 ø 150 mm
 Art. ID: 0020.3453.02



Finiblock
 ø 30 mm, hard/soft
 Art. ID: 0020.3285.02
 with microklett

Finiblock
 ø 30 mm, hard/soft
 Art. ID: 0020.3286.02
 for self adhesive discs



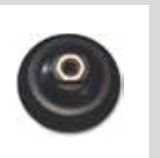
Hand sanding block
 for wet & dry sanding
 70 x 125 mm
 Art. ID: 0020.0343.02
 2 sides hard/soft
 with microklett



Hand sanding block
 70 x 125 mm
 Art. ID: 0020.0389.01
 with slit, without klett



**Flexible hand sanding
 block**
 60 x 128 x 16 mm
 Art. ID: 0020.3713.02
 2 sides soft/extra soft



Backing pad, M14
 Ø 125 mm: Art. ID: 0020.6669.02
 Ø 75 mm: Art. ID: 0020.4899.02
 Backing pad, 5/8"
 Ø 125 mm: Art. ID: 0020.6741.02

System components



siachrome cut
 scratch remover, 1 kg
 Art. ID: 0020.6663.01



siachrome finish
 microfne finishing paste
 1 kg Art. ID: 0020.6664.01



siachrome pearl
 paint sealant 1 l
 Art. ID: 0020.6667.01



siachrome platinum
 Premium paint sealant
 200 ml Art. ID: 0020.6665.01



siachrome magic
 Heavy-duty cleaner 0.5 l
 Art. ID: 0020.6666.01



Polish-bottle stand
 for 1 kg / 1 l siachromebottle
 Art. ID: 0020.7431.01



Lambskin disc,
 siafast
 ø 135 mm
 Art. ID: 0020.6674.01
 ø 85 mm
 Art. ID: 0020.6673.02



Polishing disc yellow,
 siafast
 ø 145 mm
 Art. ID: 0020.6671.02
 ø 85 mm
 Art. ID: 0020.6672.02



Polishing disc black,
 siafast
 ø 145 mm
 Art. ID: 0020.6676.02
 ø 85 mm
 Art. ID: 0020.6675.02



Application puck
 ø 130 mm
 Art. ID: 0020.6668.01



**Premium Extra
 cleaning cloth**
 400 x 400 mm
 Art. ID: 0020.6670.01



**Microfibre
 Cleaning cloth**
 380 x 380 mm
 Art. ID: 0020.3185.01

Polishing system



Your Key to a Perfect Surface
Your Key to a Perfect Surface

www.sia-abrasives.com