

SATAjet® X 5500

RP® /HVLP



Technical data:

	RP	HVLP
Inlet pressure	Operating range (Field of application): 0.5 bar – 2.4 bar Compliant: max. 2.0 bar	Operating range (Field of application): 0.5 bar – 2.4 bar Compliant: max. 2.0 bar
Air consumption at 2.0 bar bar	290 NI/min	430 NI/min
Spray distance	Operating range (Field of application): 10 cm – 21 cm Recommended: 17 cm – 21 cm	Operating range (Field of application): 10 cm – 21 cm Recommended: 10 cm – 15 cm



I-NOZZLE

	1,1	1,2	1,3	1,4	1,5	1,6
--	-----	-----	-----	-----	-----	-----

Standard with RPS multi-purpose cup 0.6 l / 0.9 l (each 1x) with swivel joint

RP	1061548	1061556	1061564	1061572	1106534	1106542
HVLP	1061895	1061902	1061887	1061910	1061928	-

DIGITAL with RPS multi-purpose cup 0.6 l / 0.9 l (each 1x) with swivel joint

RP	1061621	1061647	1061697	1061712	-	-
HVLP	1061994	1061879	1062025	1062033	1062067	-

Nozzle set

RP	1063536	1063544	1063552	1063560	1106493	1106526
HVLP	1063619	1063627	1063635	1063651	1063669	-

O-NOZZLE

	1,1	1,2	1,3	1,4	1,5	1,6
--	-----	-----	-----	-----	-----	-----

Standard with RPS multi-purpose cup 0.6 l / 0.9 l (each 1x) with swivel joint

RP	1061580	1061598	1061605	1061613	1106550	1106568
HVLP	1061936	1061944	1061952	1061960	1061978	-

DIGITAL with RPS multi-purpose cup 0.6 l / 0.9 l (each 1x) with swivel joint

RP	1061746	1061788	1061803	1061829	-	-
HVLP	1062075	1062108	1062124	1062158	1062166	-

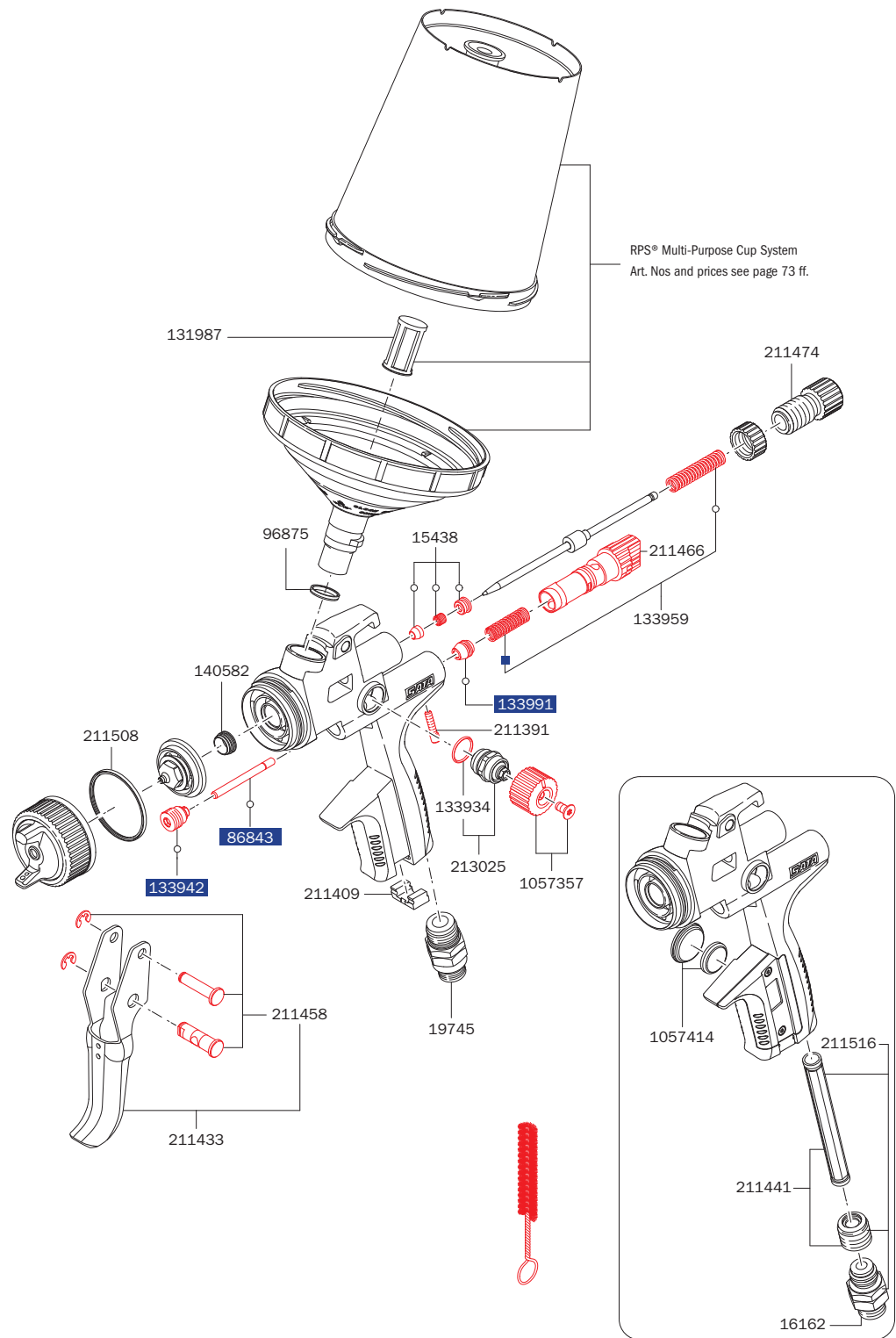
Nozzle set

RP	1063578	1063586	1063594	1063601	1106500	1106518
HVLP	1063677	1063685	1063643	1063693	1063700	-

Spare parts

SATAjet® X 5500

15438	Paint needle packing
16162	Swivel joint
19745	Swivel joint
86843	Air piston rod
96875	PVC insert for paint spray guns with QCC cup connection
131987	Spare plug-in sieve 200 µm, pastel green (packing unit 100 pieces)
133934	Sealing (packing unit 3 pieces) for spindle
133942	Seal retainer, cpl.
133959	Pressure spring (3 pieces) for paint needle and air piston
133991	Air piston head (packing unit 3 pieces)
140582	Sealing element (packing unit 5 pieces) for fluid tip
211391	Locking screw (packing unit 3 pieces) for air micrometer
211409	CCS-Clips, green, blue, red, black (packing unit 4 pieces)
211433	Trigger kit
211441	Seal retainer with sleeve
211458	Trigger sleeve kit
211466	Air micrometer
211474	Material flow control with counter nut
211508	Sealing ring (packing unit 5 pieces)
211516	Swivel joint with seal retainer and sleeve
213025	Spindle, cpl., for round / flat spray control
1057323	Tool kit
1057357	Control knob with screw (packing unit 2 pieces)
1057414	Battery kit



RPS® Multi-Purpose Cup System
Art. Nos and prices see page 73 ff.

Tool kit

- 1057323
- Universal spanner
- Combi tool
- Cleaning brush
- CCS clips
- Paint strainer



1097379
Universal spanner kit (pack of 3 pieces)

Repair kit

- 1047522
Repair kit
- 82552
Air piston service unit
- 136960
Sealing kit

The revolutionary nozzle system

State-of-the-art paint systems and the latest application recommendations open up new possibilities, but also pose new challenges for professional painters. The SATAjet X 5500 featuring the new X-nozzle system now defines a wholly new application standard for the future.

The concept of this nozzle system is easy and straightforward to understand: Both proven application technologies – HVLP and RP – remain available, but now each of them with the additional choice between "I" and "O"-nozzle sets. In line with the increasing nozzle sizes within each of the respective technology (HVLP / RP), the material flow rate increases too with constant increments – which means that the spray fan size and width remain unchanged across the entire nozzle spectrum. In essence, end-users can now rely on a transparent and consistent system which offers them clear and well-structured application options.

The "I"-nozzles produce a parallel spray fan pattern with a minimal dry zone and a drier centre which is ideal for painters preferring a **reduced application speed** and maximum application control during the painting process. The **film build per coat** in comparison to an "O"-nozzle of the same size is **slightly reduced**.

- Parallel spray fan with minimal dry zone
- Improved control during application
- Reduced film build per coat compared to the nozzle set currently in use or the "O"-nozzle

"O"-nozzles do have an oval-shaped spray fan pattern with a larger dry zone and a wet core to accommodate **increased application speed** at the expense of slightly less application control during the painting process. The **film build per coat** in comparison to an "I"-nozzle is **slightly higher**.

- Oval-shaped spray fan with larger dry zone
- Wet core for increased application speed
- Film build per coat slightly higher compared to the "I"-nozzle

SATAjet® X 5500 HVLP

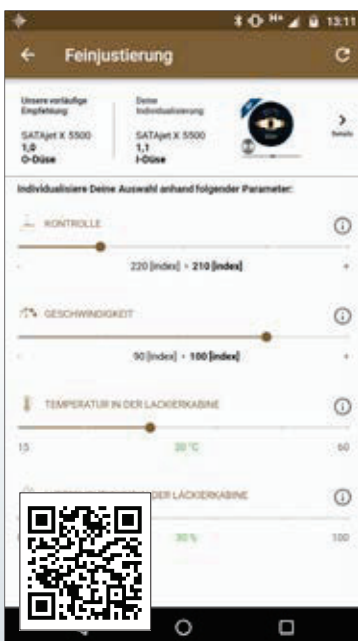
SATAjet® X 5500 RP® Digital



PRODUCT BENEFITS

- Revolutionary: The X-nozzles are taking atomisation to a whole new level
- Noticeably quieter: Whispering nozzle™ due to optimised air flow geometry, reduced noise level in the relevant sound frequency ranges
- Individual: Matches any application requirement, such as specific characteristics of the paint system, climatic conditions and application method (application speed/application control)
- Precise: Optimised material distribution for enhanced spraying uniformity and atomisation with both spray fan shapes
- Low maintenance: No air distribution insert required, thus also ensuring a much easier and faster cleaning process
- Consistent: Constant fan size across the entire nozzle spectrum (within each respective atomisation technology) with linear increases of the material flow rate
- Efficient: The optimised atomisation concept enables to realise considerable material savings using the same application method as before

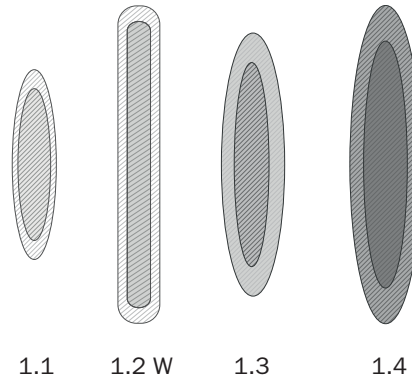
Select your favorite nozzle



www.sata.com/nozzlefinder

SPRAY FAN SHAPES

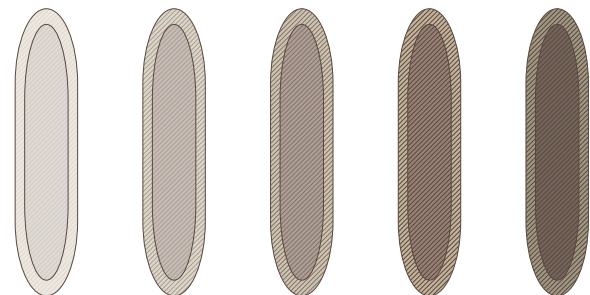
Examples of current fan shapes



1.1 1.2 W 1.3 1.4

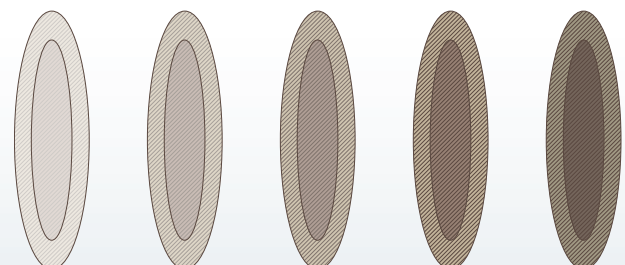
With SATAjet X 5500

Fan shape I-nozzle HVLP/RP



1.1 I 1.2 I 1.3 I 1.4 I 1.5 I

Fan shape O-nozzle HVLP/RP



1.1 O 1.2 O 1.3 O 1.4 O 1.5 O