



3M Paint Application Process

PERSONAL SAFETY

• Reusable Respirators with full face protection



• Reusable Coveralls



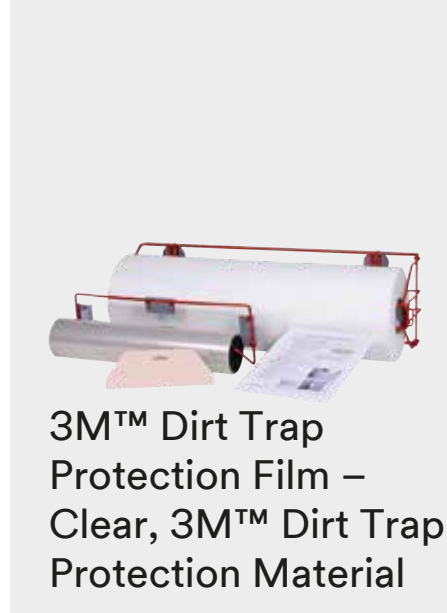
• Nitrile Gloves



Requirements for Best Results and Quality



- ▶ Apply Dirt Trap Protection Film in order to keep a clean environment in the spray booth.
- ▶ Use 3M Aircare ACU-03 to obtain proper pressurized air.
- ▶ Use 3M Protective Coveralls to protect the operator and get a cleaner job.



3M™ Dirt Trap Protection Film – Clear, 3M™ Dirt Trap Protection Material



3M™ Aircare ACU-03

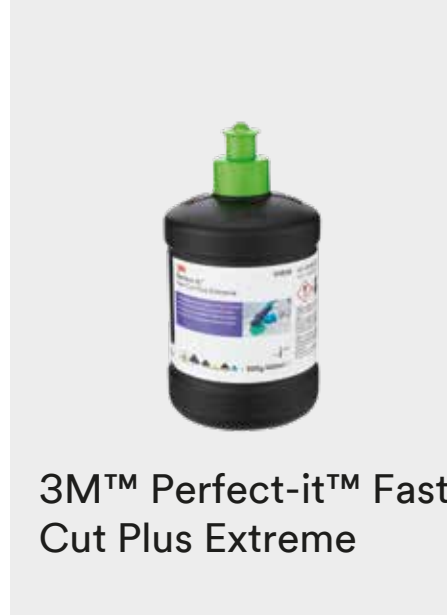


3M™ Protective Coverall 4540+

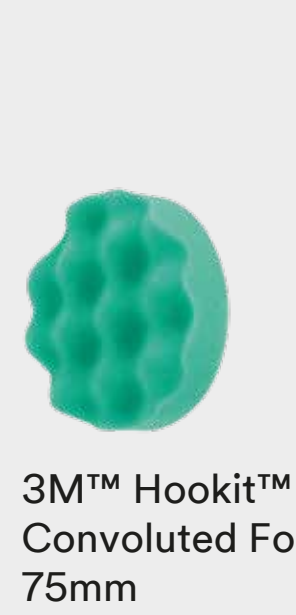
Determination of Color



- ▶ Use the 3M™ Perfect It™ Fast Cut Plus Extreme to remove paint and surface exposure for an accurate color matching.
 - ▶ If you are using the latest spectrometer technology, it is recommended to do an additional polishing step after 3M™ Perfect It™ Fast Cut Plus Extreme with 3M™ Perfect-It™ Ultrafina SE (blue cap).
- Tip: The creation of a personal colour library will make life easier for you in the future as you can reuse your own sprayout cards.



3M™ Perfect-it™ Fast Cut Plus Extreme



3M™ Hookit™ Convoluted Foam, 75mm



3M™ PPS™ Colour Check Light II

1 Mixing of Base Coat



- ▶ Different 3M™ PPS™ Series 2.0 sizes allow to fit the most common repairs in your shop.
 - ▶ By using 3M™ PPS™ Series 2.0 no additional mixing cup is needed.
 - ▶ As the filter is directly integrated to the 3M™ PPS™ Series 2.0 lid, no additional filtering stage is required.
- Note: Selecting the right format for your need will reduce the chance of overmixing of the base coat material.



3M™ PPS™ Series 2.0 Spray Cup System Kit Large 850ml, Standard 650ml, Midi 400ml, Mini 200ml

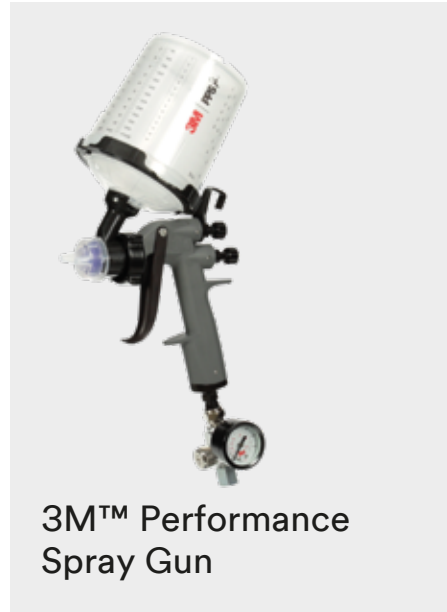


3M™ PPS™ Lid&Liner Dispensers

2 Setup 3M™ Performance Spray Gun



- ▶ Pull the trigger back
- ▶ Making sure locking collar is in the “+ configuration”
- ▶ Slide the atomizing head over the fluid needle and push towards the spray gun body
- ▶ Secure the atomizing head by rotating the retainer ring, clockwise until the retainer ring tabs are locked in the “X configuration”
- ▶ HVLP max pressure line 1.38bar (20psi)
- ▶ The Operating Pressure Range line 0,5bar (7 psi) – 2.4 bar (35 psi) max



3M™ Performance Spray Gun



3M™ Performance Gravity HVLP Atomizing Heads 1.2,1.3,1.4,1.8, 2.0

3 Base Coat Application



- ▶ Degrease the surface using paint company or other recommended product. Always follow the manufacturer's instructions.
- ▶ Cleaning the surface prior to base coat application with tack cloth.
- ▶ Always follow paint company recommendations regarding basecoat application process.
- ▶ When finished spraying, disconnect air line, invert gun and pull trigger to return excess paint to cup. Gently tap 3M™ PPS™
- ▶ Series 2.0 Lid and Liner on a surface to help break surface tension of liquid and allow it to flow back into liner.

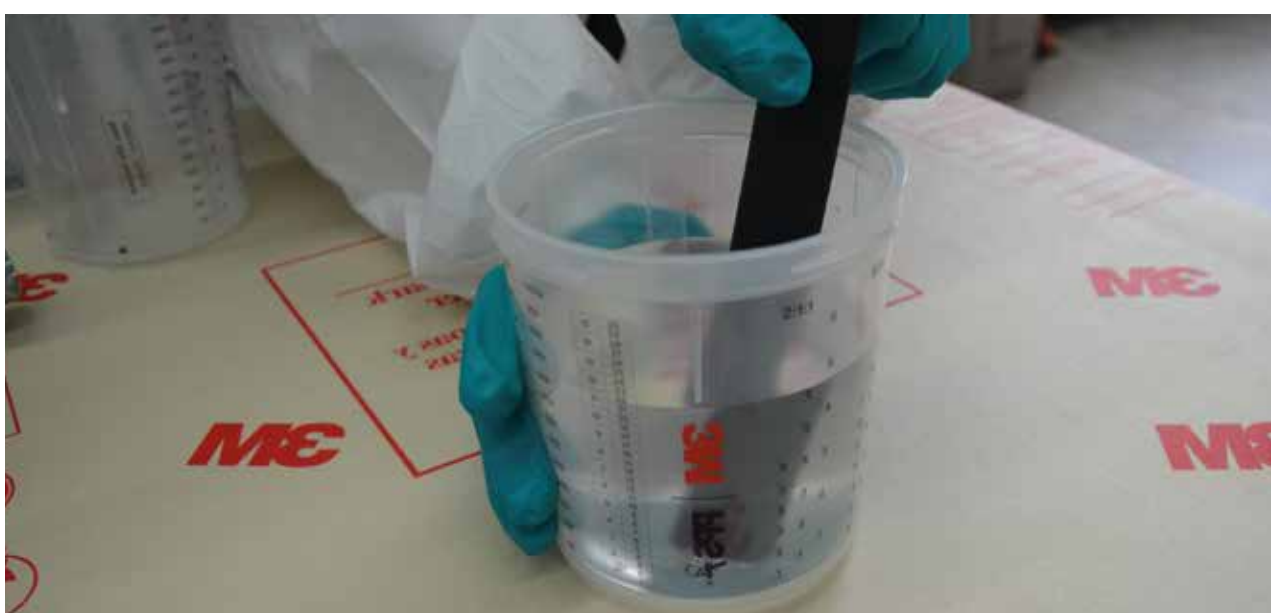


3M™ Professional Panel Wipes



3M™ Tack Cloth Aqua

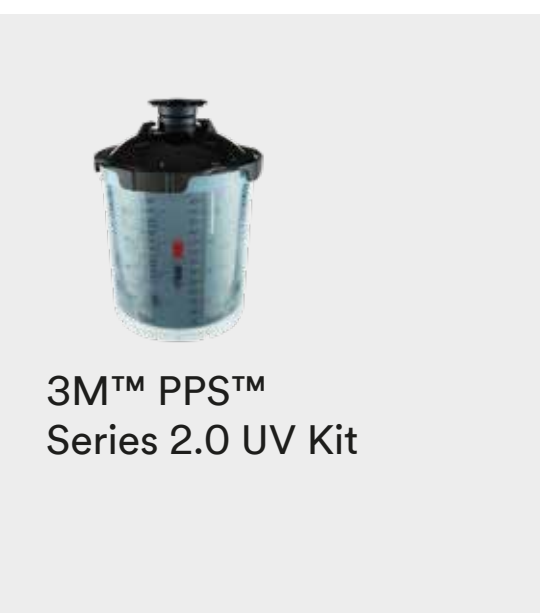
4 Mixing of Clear Coat



- ▶ Different 3M™ PPS™ Series 2.0 sizes allow to fit the most common repairs in your shop.
- Note: Modern clear coat technologies needs mixing on demand, due to accelerate pot life! Select the right format for your need, reduces the chance of over applying the clear coat due to use material, which currently starts the reaction time!



3M™ PPS™ Series 2.0 Spray Cup System Kit Large 850ml, Standard 650ml, Midi 400ml, Mini 200ml

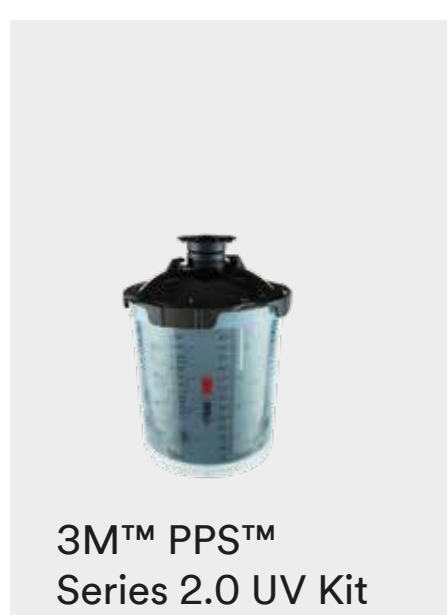


3M™ PPS™ Series 2.0 UV Kit

5 Clear Coat Application



- ▶ Always follow paint company recommendations regarding clearcoat application process.
 - ▶ 3M™ PPS™ Series 2.0 reduces cleaning work considerably and lowers your solvent consumption clearly.
- Tip: Consult paint or solvent Safety Data Sheets (SDS) in addition to local regulations or authorities for safe use and proper disposal.



3M™ PPS™ Series 2.0 UV Kit



3M™ PPS™ Series 2.0

6 Cleaning 3M™ Performance Spray Gun



- ▶ Pull the trigger back
- ▶ Rotate the locking collar counter-clockwise and pull the atomizing head away from the gun body
- ▶ Clean the needle with a solvent cross linked cloth
- ▶ Simply put on the new nozzle and you're done
- ▶ 3M™ Performance Spray Gun & PPS reduces cleaning work considerably and lowers your solvent consumption clearly



3M™ Professional Panel Wipes PN 34567

7 Forced Drying



- ▶ Please do observe the recommendations of your paint manufacturer concerning: object temperature & drying time.
- Note: The quality of drying has a positive influence on the later finishing properties of the surface. Forced drying accelerates the finish process and at the same time ensures an even drying of the paint. A clear coat, which has hardened evenly and well can be finished a lot easier.